



# SELF-GUIDED TOUR

*To view the map and get directions for this self-guided tour, please scan this QR code or go to [treasureislandmuseum.org/self-guided-tour](https://treasureislandmuseum.org/self-guided-tour)*



## TREASURE ISLAND FERRY TERMINAL

Take the scenic route to Treasure Island and back! The ferry ride is just 10 minutes from the Embarcadero, and runs from 6:30am-9:30pm (Mon-Fri), and 9am-10pm (Sat-Sun & Holidays).

*To view the schedule and purchase tickets, go to [tisf.com](https://tisf.com)*

## BUILDING ONE (ADMINISTRATION BUILDING)

Parking and Directions: Follow GPS to Treasure Island Museum. It's the semicircular building on the right as you enter Treasure Island. Park in front of Building One in the parking lot in one of the spaces marked "Visitor Parking" for up to 2 hours on weekdays (permit parking free to all visitors on weekends).

## PACIFIC UNITY STATUES

The four statues in front of the building are from the Golden Gate International Exposition World's Fair. Learn more by using the QR code next to the statues!

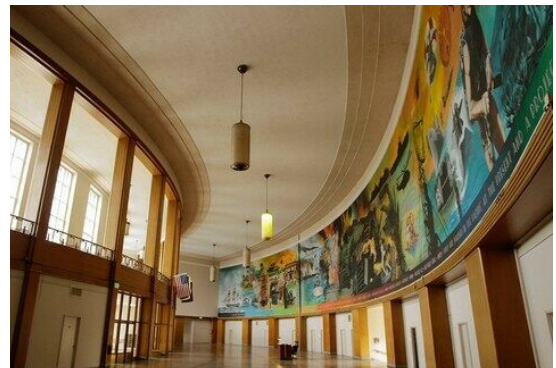


## TREASURE ISLAND MUSEUM

The Treasure Island Museum is located in the lobby of Building One.

## TREASURE ISLAND NAVAL HISTORY MURAL

The Lowell Nesbitt mural in the lobby depicts the history of the Navy in the Pacific. It was painted in 1975 for the U.S. Bicentennial, when this was the Administration Building for the Naval Station on Treasure Island.





## HISTORICAL LANDMARK (WAYSIDE MARKER)

This Wayside Marker provides an overview of the origins of Treasure Island.



## SIGNAL (PUBLIC ART)

"Signal" is a public art piece by Tom Loughlin made from repurposed steel from the East bound span of the old Bay Bridge. This is significant to the history of the Golden Gate International Exposition because the fair commemorated the building of the original Bay and Golden Gate bridges.

## SAN FRANCISCO SKYLINE VISTA & PERIMETER WALKING PATH

From this vista you can see the San Francisco skyline, the Bay Bridge, Alcatraz, and the Golden Gate Bridge! Follow the path north along the shoreline from that point and soak in the views.



## EAST BAY SKYLINE VISTA (PERIMETER PATH)

The East Bay Skyline Vista is at the end of the Perimeter walking trail. It provides a beautiful view of the East Bay and cargo ships.



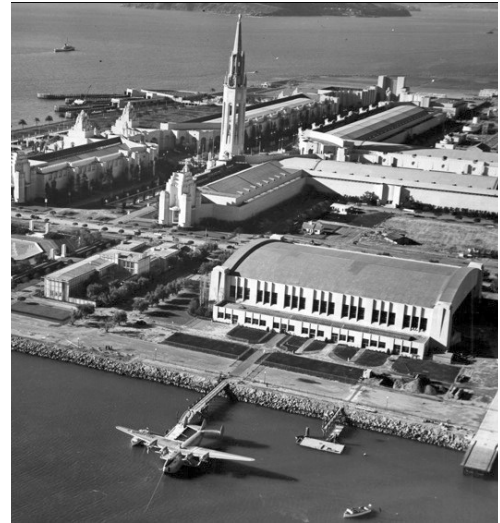
## DOGGIE DINER HEADS

A set of three dog heads, the symbol for a defunct diner chain, are mounted on a trailer that can often be spotted. Doggie Diner started in 1948 in Oakland as one of the first fast food restaurants, serving primarily hot dogs and hamburgers.



## **BUILDING 2- (FORMER HALL OF TRANSPORTATION)**

Building Two once housed Pan American Airways flying boats. Treasure Island was built to be the site of a fair, and after the fair closed, it was to be a new airport for San Francisco. The three original buildings still standing on the island--a terminal and two hangars--were created for the dual purpose. The Pan American Clippers used Treasure Island as their west coast base from 1938 to 1945. Instead of becoming an airport, Treasure Island soon became a Navy base.



## **BUILDING 3- (FORMER PALACE OF FINE AND DECORATIVE ARTS)**

During the Golden Gate International Exposition, Building Three was named The Palace of Fine and Decorative Arts. It was broken up inside into small gallery spaces to house 20 million dollars worth of art, which would be almost 382 million dollars today.



## **NAVY CHAPEL**

In 1943, the Navy Chapel was built from materials left from the demolition of the fair.



## **OLIVE TREES**

Vintage olive trees from the 1939-40 Golden Gate International Exposition



## **SFFD TREASURE ISLAND TRAINING FACILITY**

The remnants of the recently closed Fire Department training facility are visible from the sidewalk.

