

Treasure Island Community Development (TICD) PHASE 1 CONSTRUCTION ADVISORY

**Treasure Island
Traffic Reroute through Ave C (Seven Seas Ave)
Starting Monday, February 13, 2023**

Beginning at 7am on Monday **February 13, 2023**, Treasure Island Community Development (TICD) and its contractors will implement permanent changes for traffic entering/exiting Treasure Island.

Street and Traffic Impacts

- Avenue of the Palms in front of Building 1 and along the shoreline will be closed.
- Inbound traffic will be directed to turn right to Clipper Cove Avenue at the bottom of the Causeway and then turn Left to Seven Seas Avenue and continue to 9th Street to access destinations on the island. Outbound traffic will turn from 9th street and onto Seven Seas Avenue and turn right on Trade Winds Avenue and then left to Treasure Island Road to Yerba Buena Island and outbound destinations. Please see the second page of this notice for a traffic circulation map depicting the new route.
- The MUNI route will follow the new detour as described above. New inbound bus stops will be added on Clipper Cove Avenue near Treasure Island Road across from Building 1 and on Seven Seas Avenue near Bruton Street. A new outbound MUNI bus stop will also be added on Seven Seas Avenue at Bruton Street. The existing bus stop on 9th Street between Avenue B and Seven Seas Avenue and the existing inbound bus stop in front of Building 1 will be closed. Please see second page of this notice for a map of the bus stops along the new traffic routes
- Electronic message boards will be set up at key intersections to direct drivers to the correct routes. Additionally, from February 13 to February 15, 2023, flag persons will be stationed at key intersections to guide and further assist drivers.

Avenue of the Palms Shoreline Access Impacts

- Ave of the Palms/Shoreline Road (from Trade Winds Ave to 9th Street) including the pedestrian pathway will be closed to public access so that TICD and its contractors may commence the construction of Cityside Park in this footprint. The northern end of the Avenue of the Palms and western end of 9th Street will remain open for pedestrian access only. The map on the second page of this notice shows the specific portion of Avenue of the Palms/Shoreline Road to be closed for construction.

Building 1, Marina, and Building 1 Market Access

- As depicted in the map on page 3 of this flyer, there will be one-way traffic circulation around Building 1 for the approximately the next 6 weeks to allow TICD and its contractors to construct new sidewalk, streetlight and other improvement on Treasure Island Road in front of Building 1.
- Visitors, tenants and staff arriving on Treasure Island will need to access Building 1 and Marina/Market parking by driving around the building via Clipper Cove Avenue, Seven Seas Avenue, and Trade Winds Avenue to Treasure Island Road and then turn left into the Building 1 parking lot. Please see the third and fourth pages showing the enlarged traffic and pedestrian routing maps for this area.

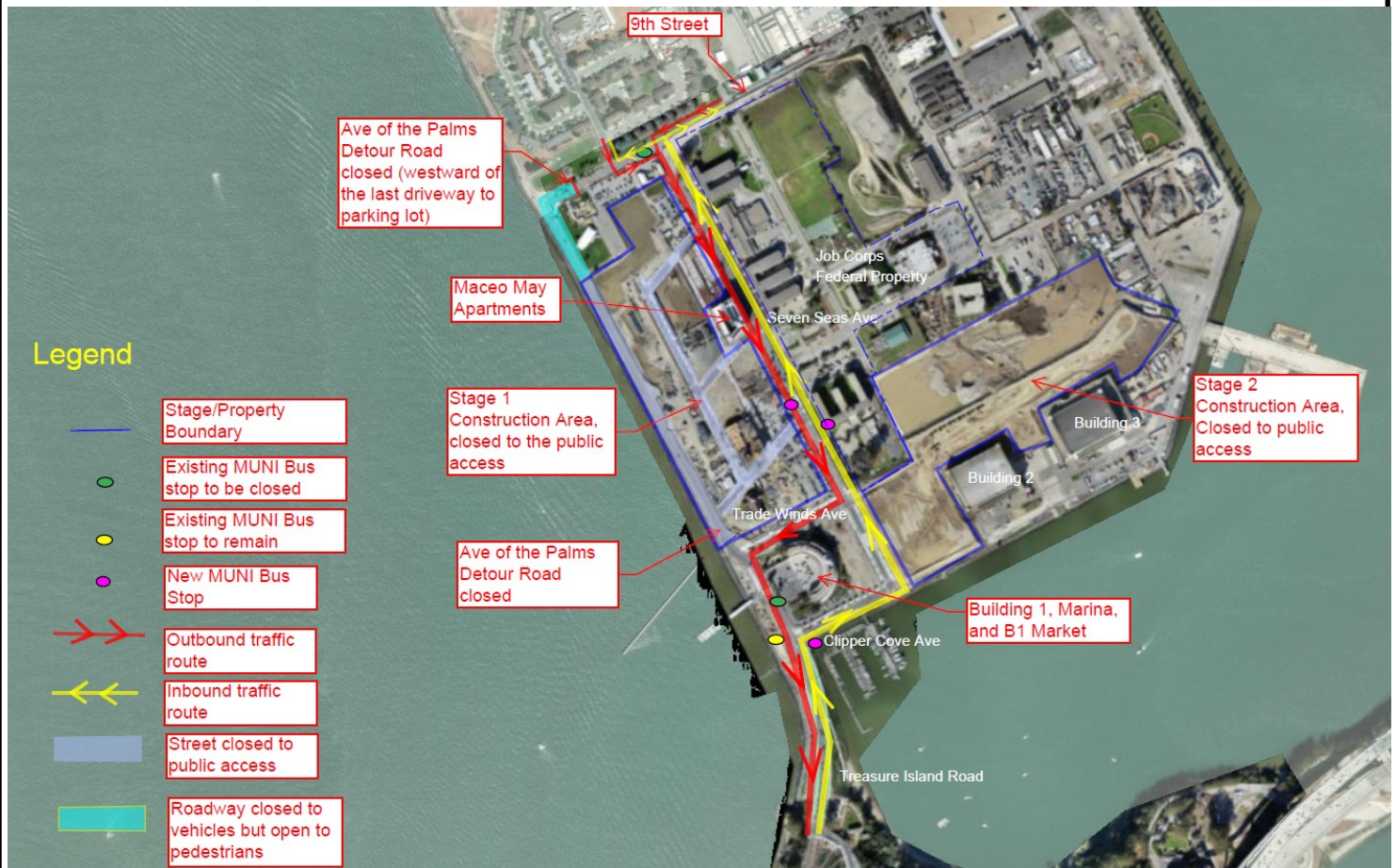
TICD Construction Hotline (888) 469-0797

Please call the TICD Construction Hotline with any questions or concerns related to construction activities associated with the redevelopment of Treasure Island and Yerba Buena Island.

<https://sf.gov/information/current-island-construction-impacts>

Treasure Island Community Development (TICD) PHASE 1 CONSTRUCTION ADVISORY

Treasure Island
Traffic Reroute/Detour through Ave C (Seven Seas Ave)
Starting Monday, February 13, 2023



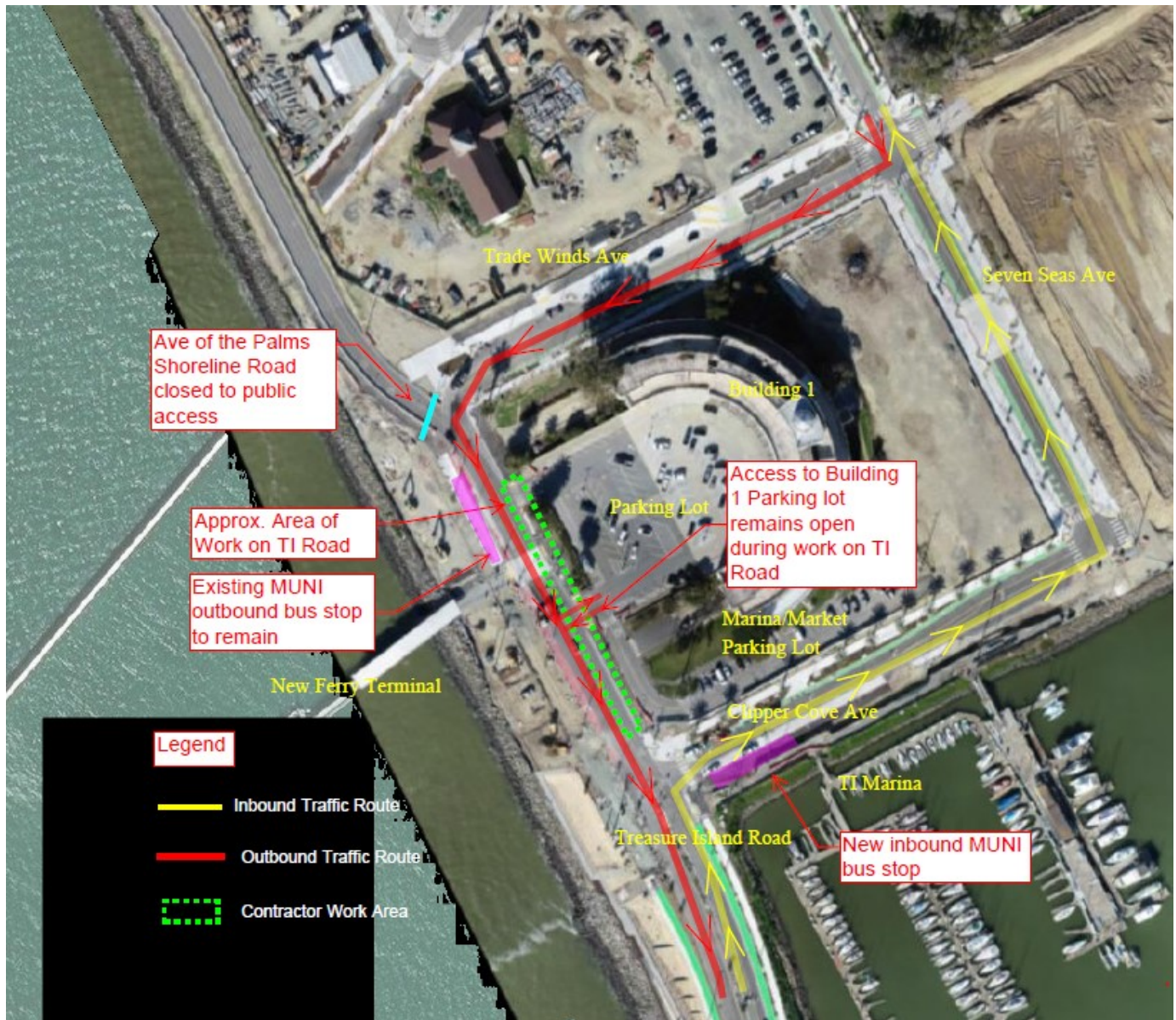
TICD Construction Hotline (888) 469-0797

Please call the TICD Construction Hotline with any questions or concerns related to construction activities associated with the redevelopment of Treasure Island and Yerba Buena Island.

<https://sf.gov/information/current-island-construction-impacts>

Treasure Island Community Development (TICD) PHASE 1 CONSTRUCTION ADVISORY

Treasure Island
Traffic Reroute/Detour through Ave C (Seven Seas Ave)
Starting Monday, February 13, 2023



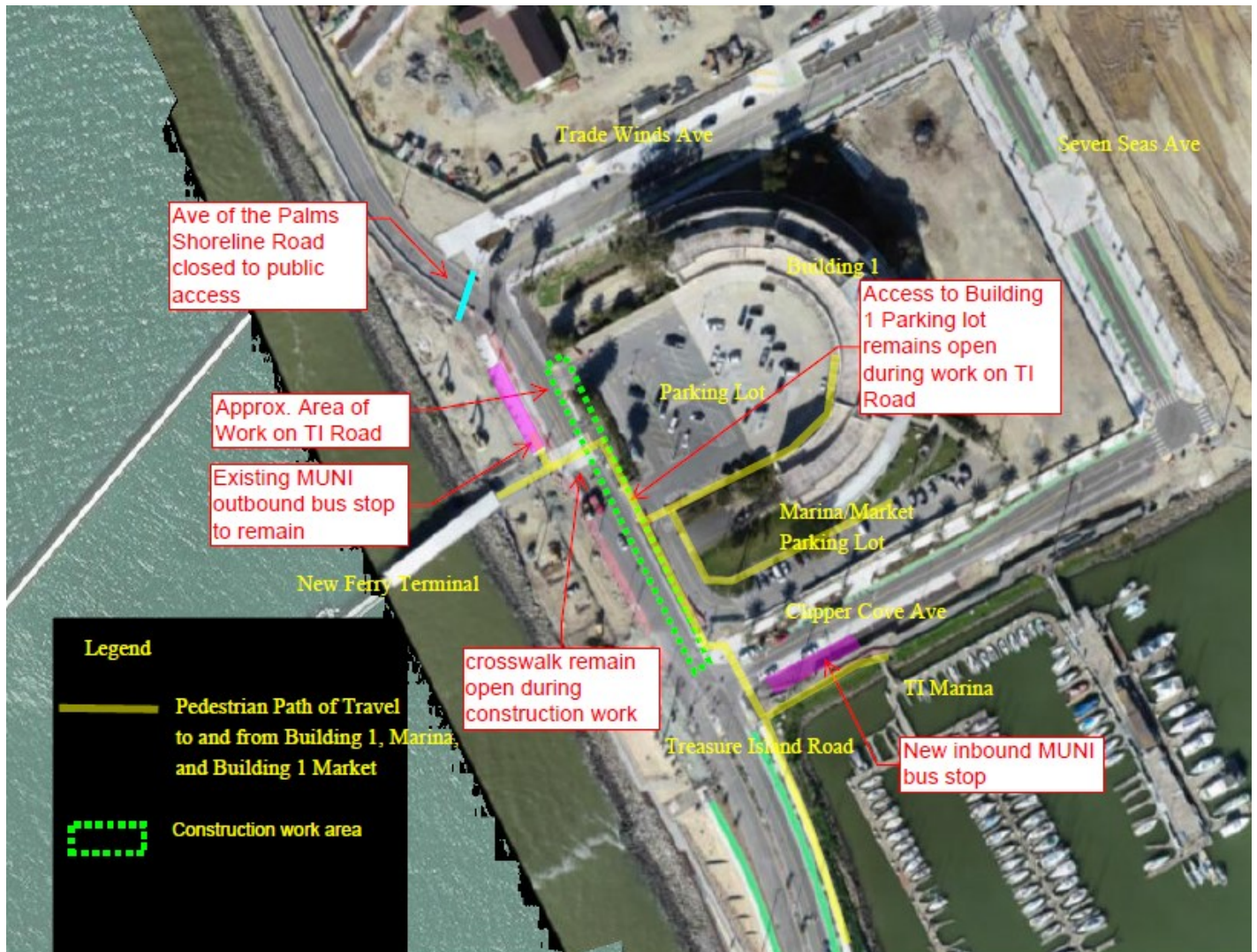
TICD Construction Hotline (888) 469-0797

Please call the TICD Construction Hotline with any questions or concerns related to construction activities associated with the redevelopment of Treasure Island and Yerba Buena Island.

<https://sf.gov/information/current-island-construction-impacts>

Treasure Island Community Development (TICD) PHASE 1 CONSTRUCTION ADVISORY

Treasure Island
Traffic Reroute/Detour through Ave C (Seven Seas Ave)
Starting Monday, February 13, 2023



TICD Construction Hotline (888) 469-0797

Please call the TICD Construction Hotline with any questions or concerns related to construction activities associated with the redevelopment of Treasure Island and Yerba Buena Island.

<https://sf.gov/information/current-island-construction-impacts>